

Killimer Road, Kilrush, Co. Clare, Tel: (065) 905 1760, Fax: (065) – 905 1782  
Email: [info@vandeleurwalledgarden.ie](mailto:info@vandeleurwalledgarden.ie) Web: [www.vandeleurwalledgarden.ie](http://www.vandeleurwalledgarden.ie)

**Spring  
2008**

With the new year, a lot of new year resolutions were probably made. So why not decide to help us to become environmentally friendlier by receiving the Newsletter by email? Just write an email to the above mentioned address and we will send all future Newsletters to you by email.

**Thank you for your environmental awareness!**

### Important: Opening Hours

Please note that we are still on Winter opening hours:  
Mon to Fri: 10am – 5pm (last entry @ 4.30pm)

We will be back on Summer opening hours from 1<sup>st</sup> April on:  
Daily: 10am – 6pm (last entry @ 5.30pm)



### Winter impressions

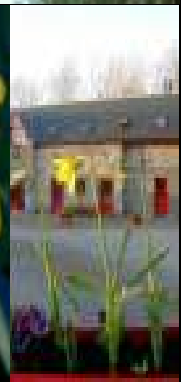
With the new year just begun, snow changed the courtyard and garden into a winter wonderland – just for few hours.

But this proves again that the garden is nice at any time of the year and worth a visit.....



.....and after a walk in the fresh air, it is always nice to come into our coffee shop to warm up with a cuppa and a treat of our home made food and cakes.

Now the first Spring flowers have started blooming and the lovely scent of the 'Sarcococca confusa' greets the visitor coming into the garden.



### Upcoming events:

Sunday 4<sup>th</sup> May 2008 Vandeleur Walled Garden Spring Open Day (free entry)  
with Plant Sales and Craft Fair (to be confirmed)

We have not set any dates yet but look out for our gardening workshops in Spring! If you are generally interested in gardening workshops you may want to leave your contact details with us so we can inform you directly about any upcoming workshops. Or just check our website for events.



### News from the Garden

We are currently improving the entrance area with a paved path leading to the centre and coffee shop to provide easier access for wheelchairs. Our apologies for any inconvenience caused while the work is being done.

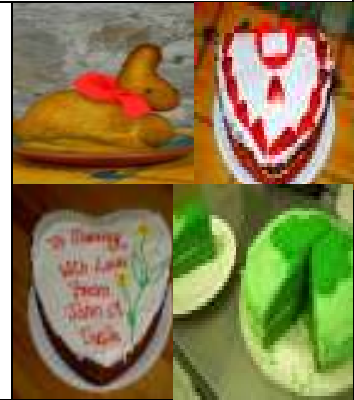
The first daffodils are already blooming in our sheltered courtyard area and we are looking forward to the days getting longer and warmer to bring all Spring flowers into bloom.

The sun already has some power and along the north wall it can be pleasantly warm so that anyone who it was too cold to go for a walk in December has no excuse. Should it rain – well there is always a cup of tea or coffee not too far from the Garden.

### News from the Coffee Shop

By now all the Christmas cakes, mince pies etc. that we made to your order are most likely eaten up and Valentines Day, Mothers Day (2<sup>nd</sup> March!!!), St. Patricks Day and Easter are lining up and we are of course there to help you to make your beloved ones happy with a sweet treat.

Valentines and Mothers Day hearts, green cakes and muffins for St. Patricks Day and lovely Easter cakes can all be ordered at the Coffee Shop. Last orders will always be taken up to 10 days before the actual event. A sweet homemade treat might be just the perfect little gift. Or you might just want to treat yourself.



### News from the Gift Shop



Looking for the perfect gift? We might just have the right thing! With Valentines and Easter coming up we have added some nice Spring items. With our general range of gift items for children and grown ups, handcrafted garden accessories and flower baskets for every occasion, we hope you will find just the present you have been looking for.

Should you not find the present you are looking for – how about an annual membership for the walled garden? Don't just give some flowers – give a garden full of flowers for a year that does not require YOUR maintenance ☺

Also available are vouchers for access to the garden with e.g. a complimentary lunch or tea / coffee and scones!

### Annual Memberships:

Treat yourself or someone else to an annual membership of the Vandeleur Walled Garden and enjoy the garden through each changing season. The ideal gift that does not get dusty and has no calories ☺

- ❖ Annual Membership: For just €25 you and one friend may visit the garden as many times as you wish for 12 months.
- ❖ Family Membership: For only €40 two adults and up to three children may visit as many times as they wish for 12 months.
- ❖ Corporate Memberships are also available.

Through your annual membership you will be supporting a local amenity and tourism product that Kilrush and West Clare can be proud of.

Renewal and application forms are available in the gift shop at any time.

Get a friend to be a new member and get a free plant for yourself!

